



United States Coast Guard Auxiliary

District 11 Northern Region

Serving Northern California, Nevada, Utah



SUB Vessel Safety Check Review

Prepared by:

Mike Lauro DSO-VE 11NR

and

Tony Budlong ADSO-VE 11NR

Sport Utility Boats (SUB)



The *fastest* growing area of
Recreational Boating!



What's an SUB?

Canoe, kayak, rowboat, pedal boat, but NOT a paddleboard or a vessel powered by an engine!



CANOE



KAYAK



ROWBOAT



PEDAL BOAT



Required items For SUB VSC

For more information, please see: “How to Perform a VSC on a SUB” available on the District Vessel Examiner website: <http://rbsafety.d11nuscgaux.info/ve/ve.html>.



NUMBERING

- California, Nevada, and Utah do not require registration numbers on non-motorized boats.
- Other states may have different requirements.



REGISTRATION

- This document is not required by California, Nevada, or Utah unless the vessel has a means of propulsion. There is a HIN (hull identification number) to record. However, the operator should be able to verify ownership.



LIFE-JACKET

- Each person must have an approved type I, II, III, or V PFD. Type IV is not required.
- The PFD with a whistle and safety mirror should be worn whenever under way.
- A PFD designed specifically for canoeing or kayaking is best.



SOUND PRODUCING DEVICES

All vessels must have a means of signaling sound for at least a ½ mile. SUB can meet this requirement with a marine distress whistle.



VISUAL DISTRESS SIGNALS



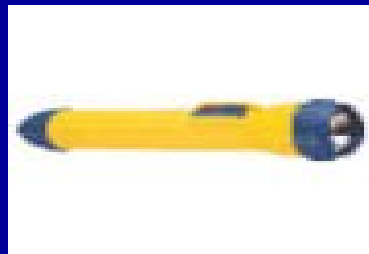
- SUB must comply with Federal and State VDS requirements. If operated in coastal waters unless with an organized group, they must have three **ORANGE** for day use, or **RED** flares for night use on board. If operated at night on inland waters, they should have at least a flashlight. In addition, a signaling mirror or an old CD should be attached to the operator pfd.





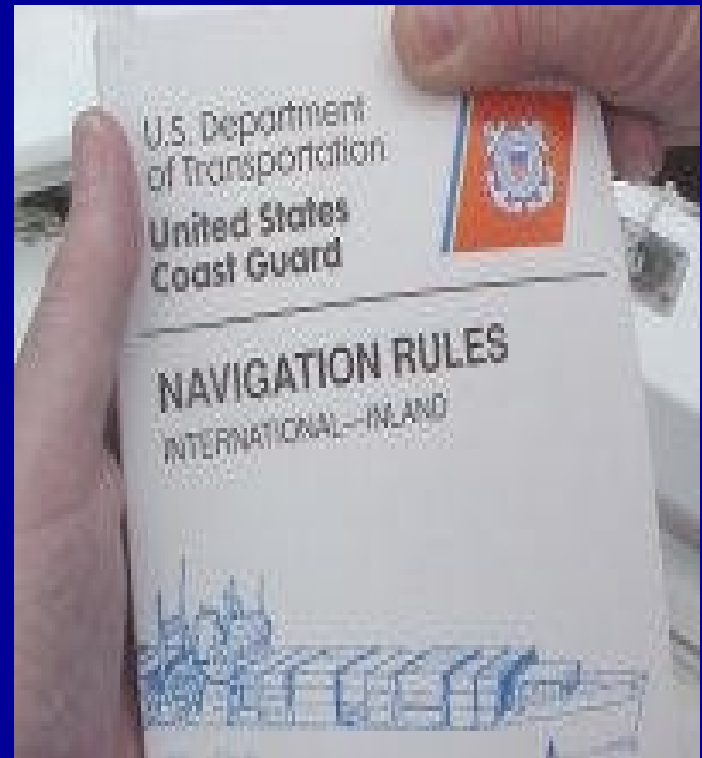
NAVIGATION LIGHTS

- Navigation Lights are required on all vessels operating at night and during periods of reduced visibility. A flashlight in good working order with spare batteries can be used on SUBs.



NAVIGATION RULES

- Boats 39.4 feet and over must have on board a current copy of the Navigation Rules. NOT required for SUBS.



STATE AND LOCAL REQUIREMENTS

- The SUB must comply with all state and local requirements-
insurance? Currently there no additional requirements.



OVERALL VESSEL CONDITION

The boat must be well maintained
and suitable for its area of use.



ADDITIONAL ITEMS RECOMMENDED
FOR ALL SPORT UTILITY BOATS FOR
A VSC-the right side of the VSC form.



FILE A FLOAT PLAN

which should include:

- Information about the operator, the vessel, and transport vehicle.
- The route of travel, date and time of arrival and departure.
- Posting a float plan with friends is a great life insurance policy.



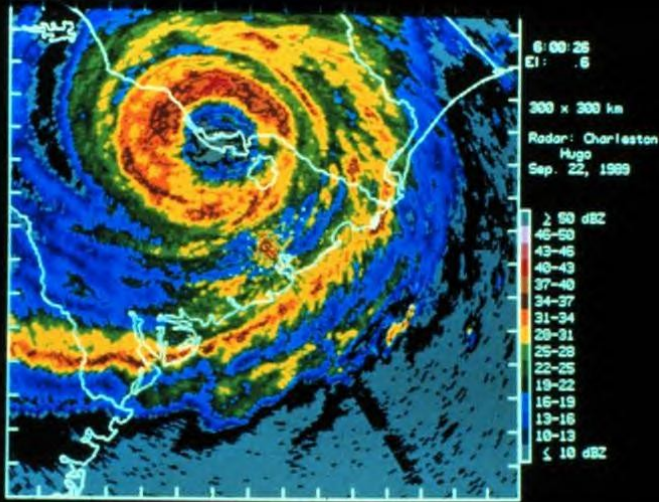
USE A SPRAY SKIRT



- Learn how to properly attach the spray skirt and how to remove it in an emergency



CHECK THE WEATHER



- Monitor weather conditions.
- Bring a weather radio or use a VHF radio with a weather channel.
- Check sky and sea conditions.
- Remind the paddler about exclusion zones around dams, docks and ships.



FIRST AID KIT

- Pack a waterproof First Aid kit.
- Suggest taking a basic first aid and CPR training.



HAT OR HELMET

- Wear a Hat for sun protection.
- Wear a Helmet for rapids, surfing, and rough seas.
- Use Sunscreen.



WATER, SNACKS, AND CLOTHING

- Dress properly for existing and expected weather conditions.
- Bring drinking water, snacks and clothing.
- Cold water requires the use of wet or dry suits in addition to wearing a lifejacket.



WATER, SNACKS, AND CLOTHING-continued



DRY-BAGS

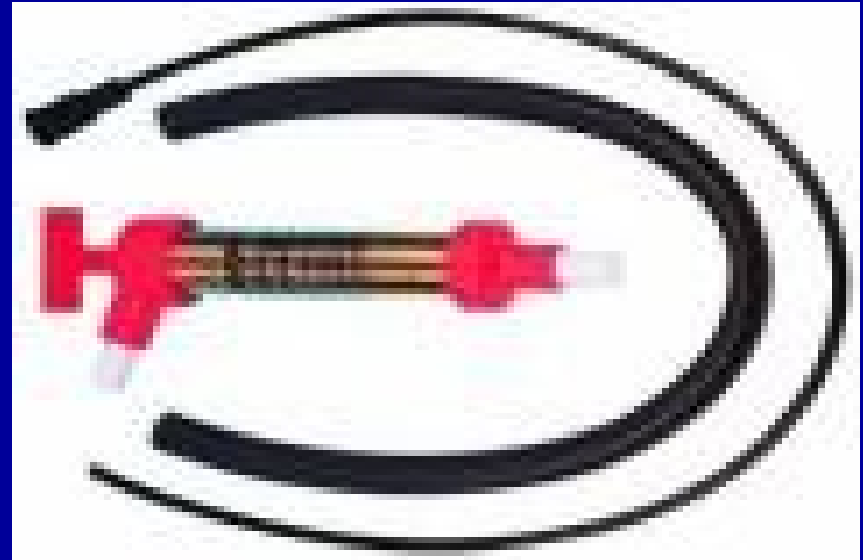


- All loose items should be stored in waterproof bags tethered to the boat.



BILGE PUMP

- On sit-in units always carry a small PVC type bilge pump for dewatering your vessel.
- Note: most sit-on kayaks have self draining holes.
- Use a floatation collar.



RESCUE GEAR

- Bring throw bags, tow lines and other rescue gear.
- Discuss **AVOIDING** drugs and alcohol!



SPARE PADDLE/OAR



- Pack a spare paddle or oar and secure it to the boat.
- Use a paddle leash attached to a forward fitting or bungee cord



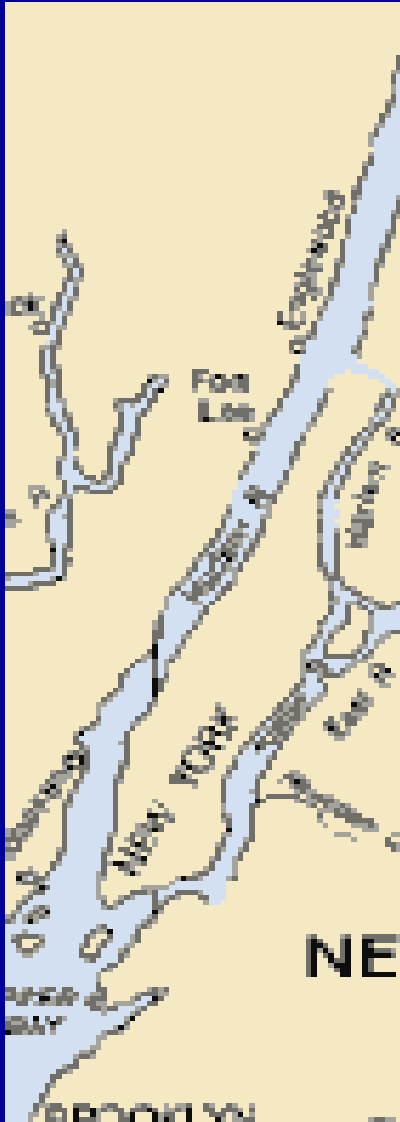
VHF RADIO, GPS, COMPASS



- Bring a VHF Radio, GPS, and Cell Phone.
- Bring a hand held compass as a back up.



CHARTS- suggest:



- Carrying a chart.
- Local knowledge of your route is key.
- Learn basic coastal navigation.



PRACTICE, PRACTICE PRACTICE....

- Practice wet exits from a kayak or canoe in safe, calm, shallow water.



OTHER ITEMS



CLEAN UP

- Pack a trash bag.
- Take all refuse away with you.
- Leave every stop cleaner than when you found it.



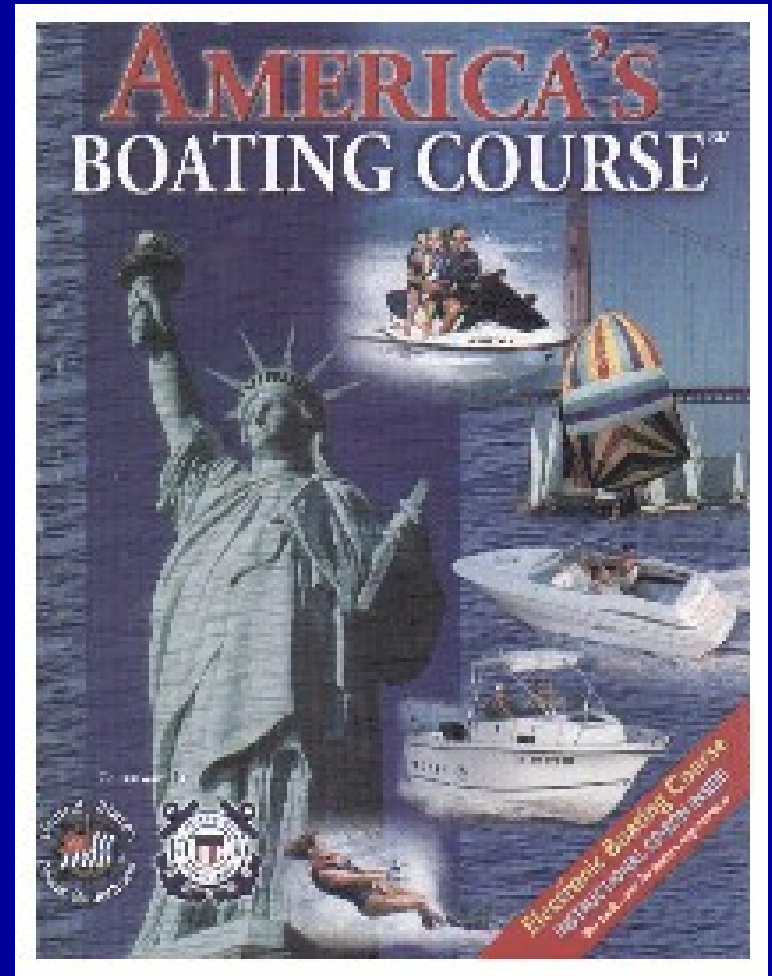
BUDDY SYSTEM

- NEVER PADDLE ALONE!
ALWAYS Bring a friend.
- It is always safer to paddle in a group.



BOATING SAFETY COURSE

- All boaters should be take a Boating Safety Course.



www.americancanoe.org

SMART START FOR PADDLERS-



SUB VSC Review

D11NR Vessel Examination Department

WE DELIVER!

For more information, please see: “How to Perform a VSC on a SUB” available on the District Vessel Examiner website: <http://rbsafety.d11nuscgaux.info/ve/ve.html>.



Prepared by:
Mike Lauro DSO-VE
and
Tony Budlong ADSO-VE